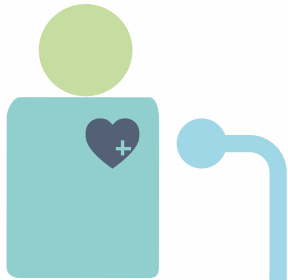


August 2015

## Information included in My Care Record

- What medications you are taking, especially important if they are many and complex
- Any allergies or details of any medication that hasn't agreed with you in the past
- A health condition that means you shouldn't have certain medicines
- Any factors which need to be considered before discharging you from hospital.



**For more information, contact your GP practice, or visit**

[www.aylesburyvaleccg.nhs.uk](http://www.aylesburyvaleccg.nhs.uk)  
[www.chilternccg.nhs.uk](http://www.chilternccg.nhs.uk)

# MyCare Record

Connecting the professionals who care for you



Aylesbury Vale Clinical Commissioning Group  
Chiltern Clinical Commissioning Group  
Buckinghamshire County Council



## Introduction

We have a new approach in Bucks to sharing patient records between clinicians and other professionals who may provide your care.

My Care Record is a system that allows medical and social care professionals to access your up-to-date GP records so they can make the right choices about the care and medical attention you need. These records are already shared but often via less secure and less efficient routes such as telephone and fax.

We know from surveys and other feedback from the public that they want health and social care professionals to be better connected and share information, so people only have to explain their situation once. My Care Record will mean that health and social care professionals will have instant access to this up-to-date information.

The first stage will involve your record being made available to health and social care professionals so they will have access to your information when you are in contact with them.

## The benefits of My Care Record

We know people understand the importance of health and social care professionals having access to basic information about patients and the people they care for.

This is especially important when care is urgent or required during evenings and weekends. The information in My Care Record will save time and could also be life-saving in some circumstances. Before My Care Record people would have to wait for information to be sent from GPs during surgery hours, which could cause delay in providing treatment, care or medication.

## How My Care Record works

Only health and social care professionals in Bucks and the immediate adjoining areas can access My Care Record. This means that they have access to the most up to date information. At no point are copies of the record created, copied or kept once the enquiry is complete. Only approved staff can log on to My Care Record. As the patient you will be asked for your permission for the record to be viewed and all access is logged so we can track precisely who has accessed the record and for what purpose.

## If you do not want to participate

You can opt out of My Care Record at any time. There is an opt out form to complete online or you can pick up a form from your GP practice. If you have opted out, health and social care professionals will continue to provide you with the safest and most efficient care possible.

